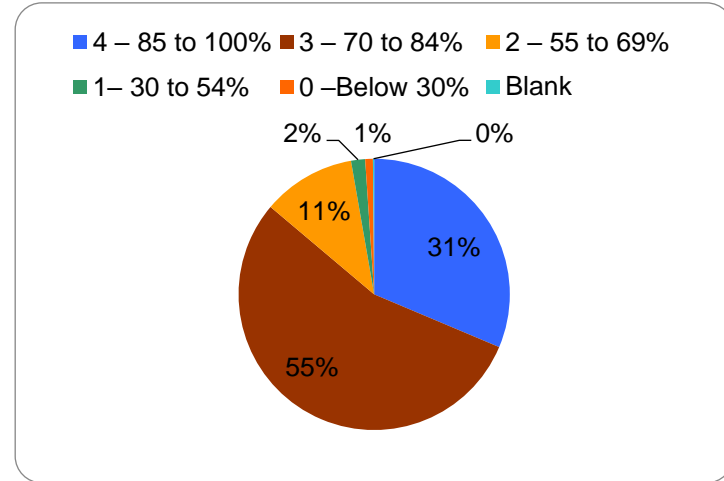


Science_UG

(N=657)

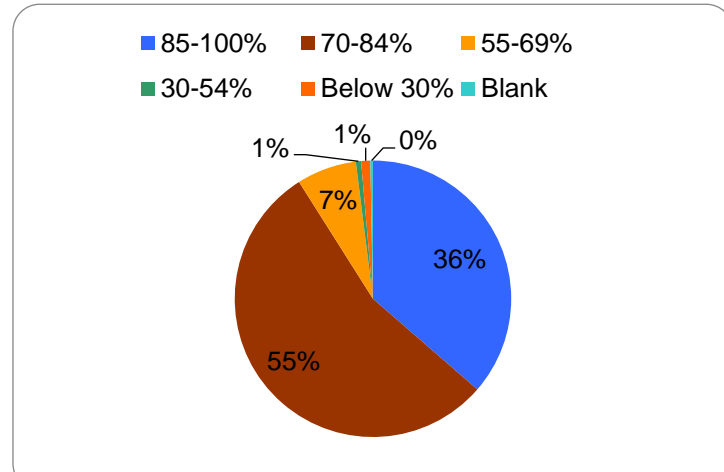
1. How much of the syllabus was covered in the class?

4 – 85 to 100%	206
3 – 70 to 84%	360
2 – 55 to 69%	73
1– 30 to 54%	11
0 –Below 30%	6
Blank	1



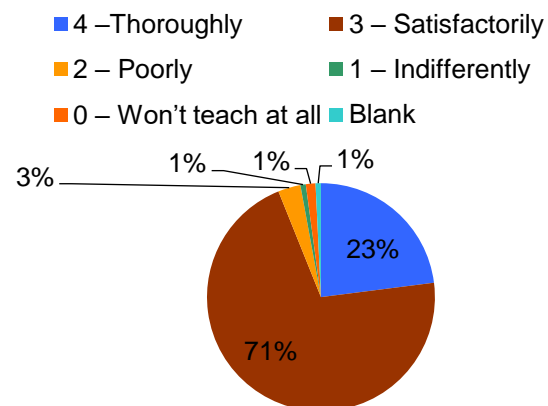
2. How many percentages of classes you have attended?

85-100%	239
70-84%	359
55-69%	46
30-54%	4
Below 30%	7
Blank	2



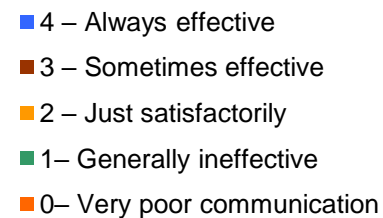
3. How well did the teachers prepare for the classes?

4 –Thoroughly	151
3 – Satisfactorily	466
2 – Poorly	21
1 – Indifferently	5
0 – Won't teach at all	9
Blank	5



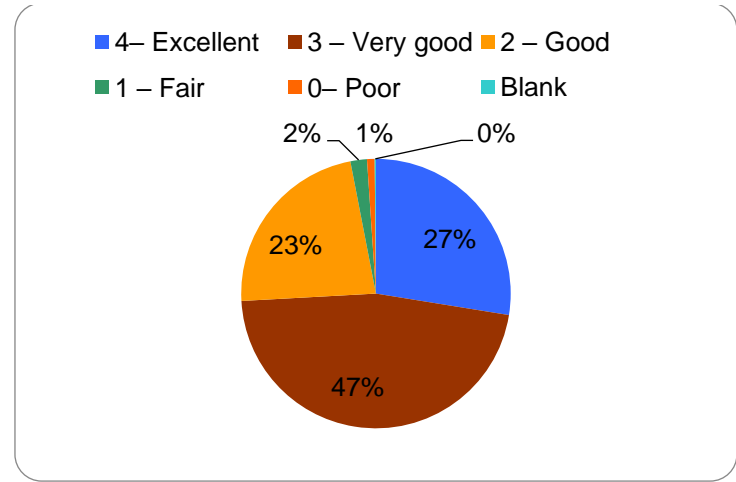
4. How well were the teachers able to communicate?

4 – Always effective	336
3 – Sometimes effective	212
2 – Just satisfactorily	87
1– Generally ineffective	4
0– Very poor communication	14
Blank	4



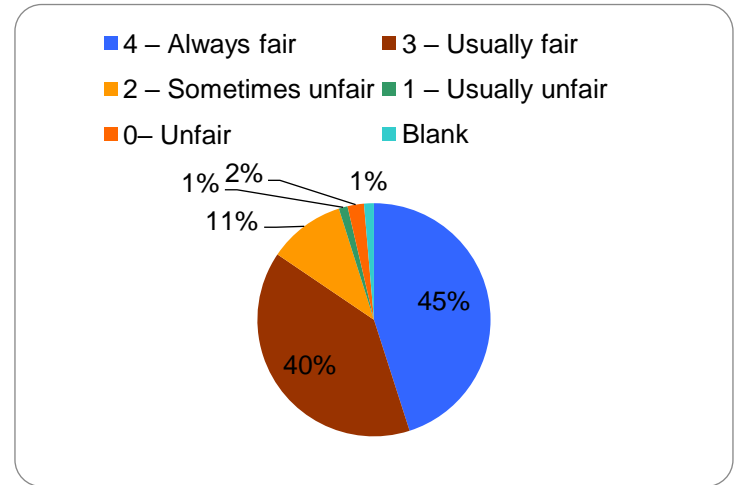
5. The teacher's approach to teaching can best be described as

4– Excellent	181
3 – Very good	306
2 – Good	150
1 – Fair	13
0– Poor	6
Blank	1



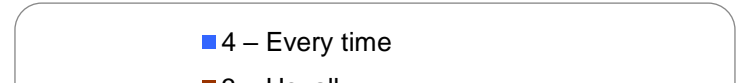
6. Fairness of the internal evaluation process by the teachers.

4 – Always fair	296
3 – Usually fair	259
2 – Sometimes unfair	70
1 – Usually unfair	8
0– Unfair	15
Blank	9

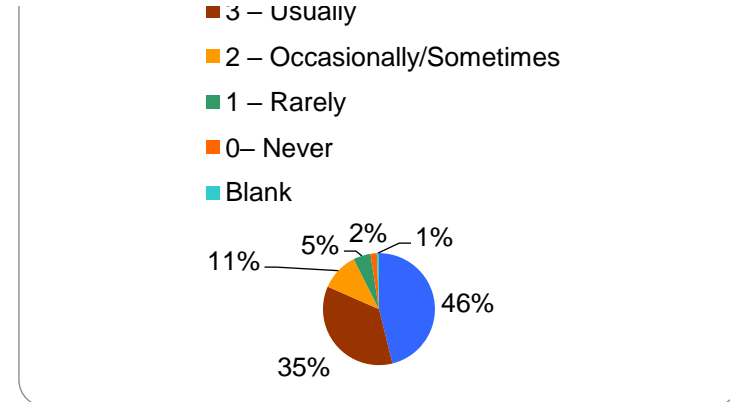


7. Was your performance in assignments discussed with you?

4 – Every time	303
----------------	-----

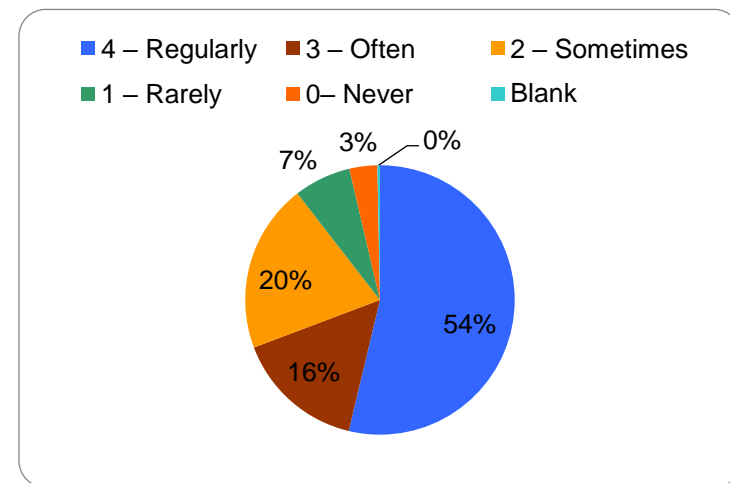


3 – Usually	233
2 – Occasionally/Sometimes	72
1 – Rarely	33
0– Never	12
Blank	4



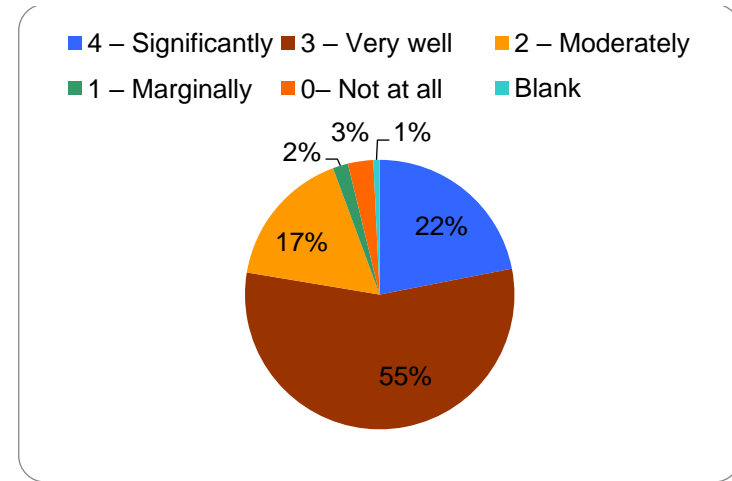
8. The institute takes active interest in promoting internship, student exchange, field visit opportunities for students.

4 – Regularly	353
3 – Often	102
2 – Sometimes	133
1 – Rarely	45
0– Never	22
Blank	2



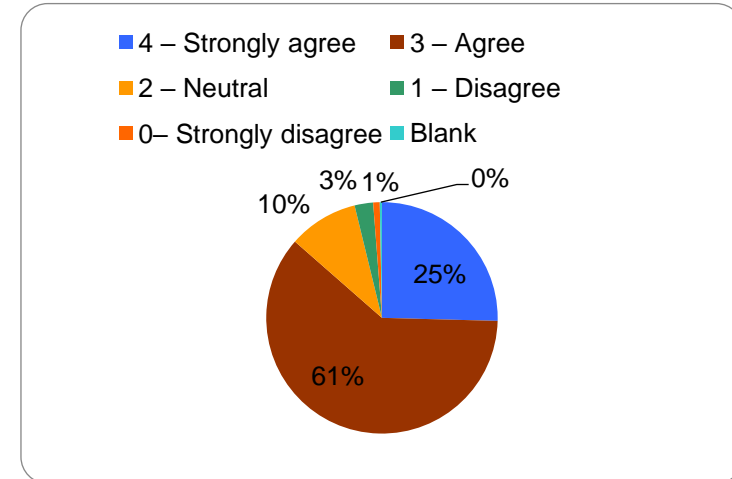
9. The teaching and mentoring process in your institution facilitates you in cognitive, social and emotional growth.

4 – Significantly	144
3 – Very well	366
2 – Moderately	110
1 – Marginally	12
0– Not at all	20
Blank	5



10. The institution provides multiple opportunities to learn and grow.

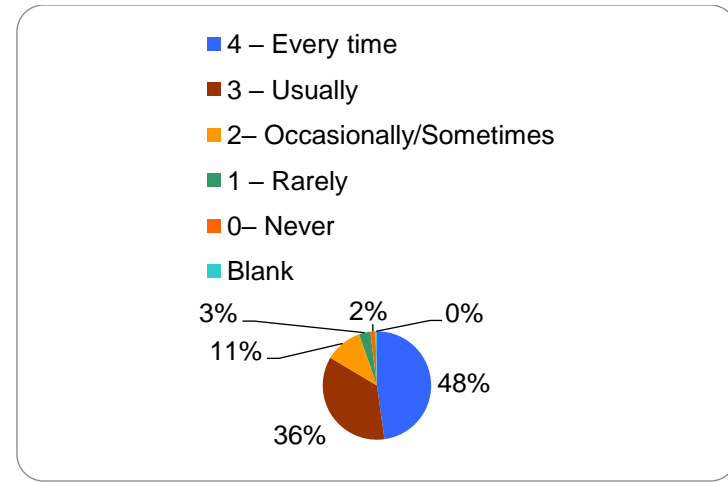
4 – Strongly agree	167
3 – Agree	401
2 – Neutral	64
1 – Disagree	17
0– Strongly disagree	6
Blank	2



11. Teachers inform you about your expected competencies, course outcomes and programme

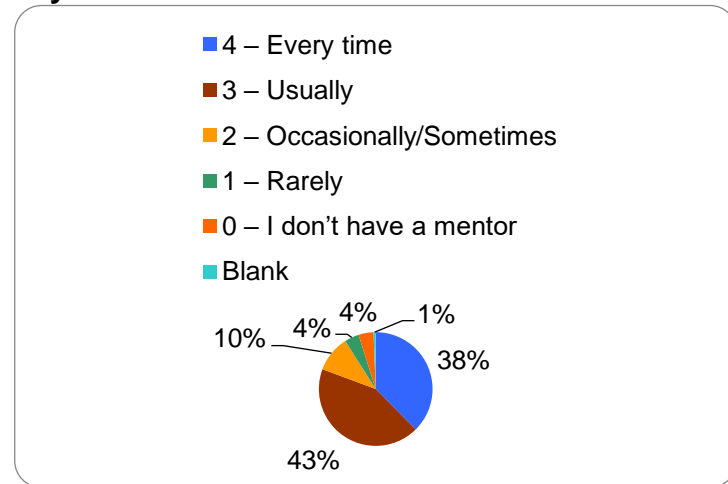
outcomes.

4 – Every time	314
3 – Usually	235
2– Occasionally/Sometimes	73
1 – Rarely	22
0– Never	10
Blank	3



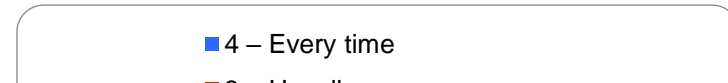
12. Your mentor does a necessary follow-up with an assigned task to you.

4 – Every time	247
3 – Usually	283
2 – Occasionally/Sometimes	68
1 – Rarely	27
0 – I don't have a mentor	28
Blank	4

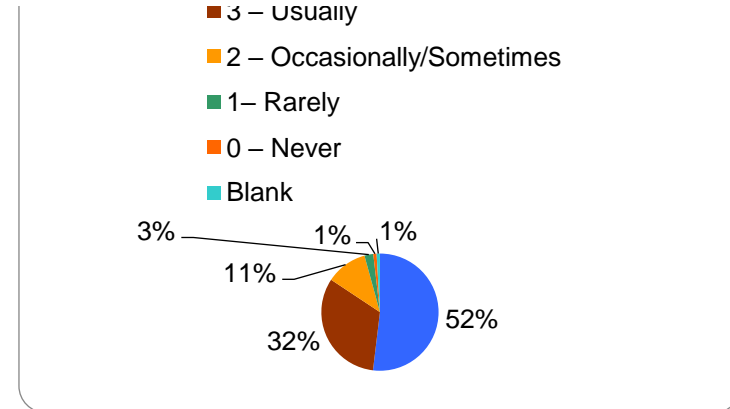


13. The teachers illustrate the concepts through examples and applications.

4 – Every time	341
----------------	-----

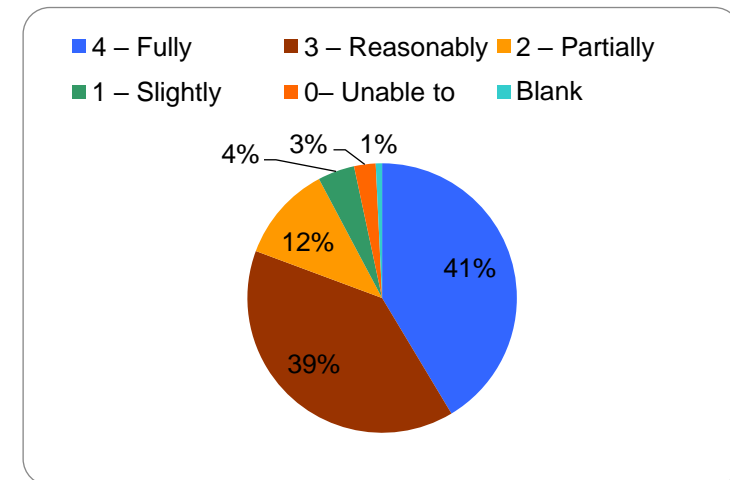


3 – Usually	213
2 – Occasionally/Sometimes	75
1– Rarely	16
0 – Never	6
Blank	6



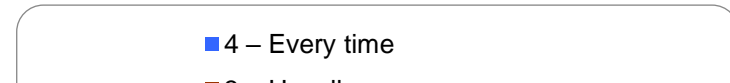
14. The teachers identify your strengths and encourage you with providing right level of challenges.

4 – Fully	272
3 – Reasonably	258
2 – Partially	76
1 – Slightly	29
0– Unable to	17
Blank	5

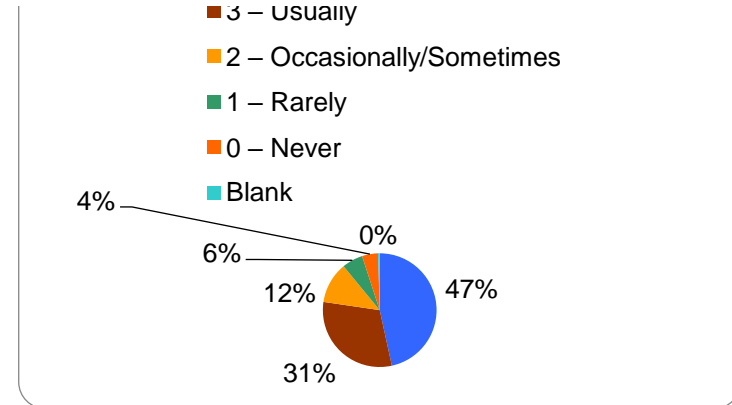


15. Teachers are able to identify your weaknesses and help you to overcome them.

4 – Every time	306
----------------	-----

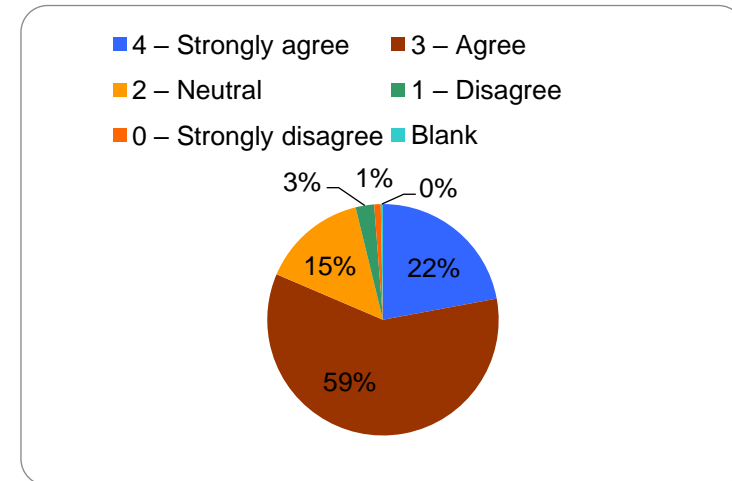


3 – Usually	202
2 – Occasionally/Sometimes	77
1 – Rarely	39
0 – Never	30
Blank	3



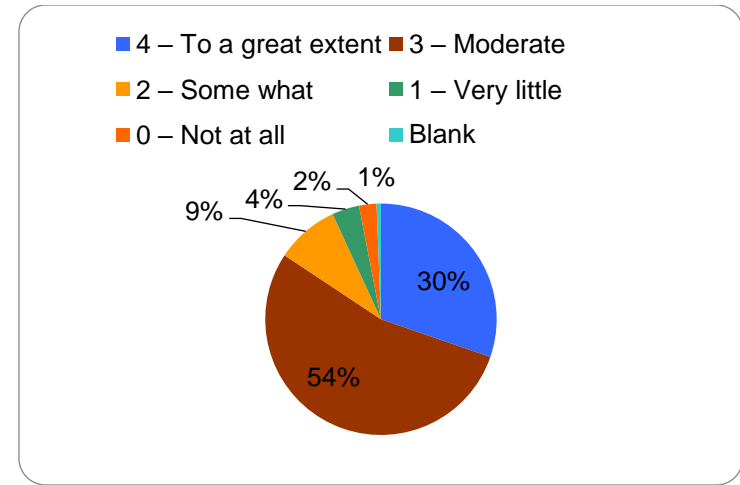
16. The institution makes effort to engage students in the monitoring, review and continuous quality improvement of the teaching learning process.

4 – Strongly agree	145
3 – Agree	390
2 – Neutral	97
1 – Disagree	17
0 – Strongly disagree	6
Blank	2



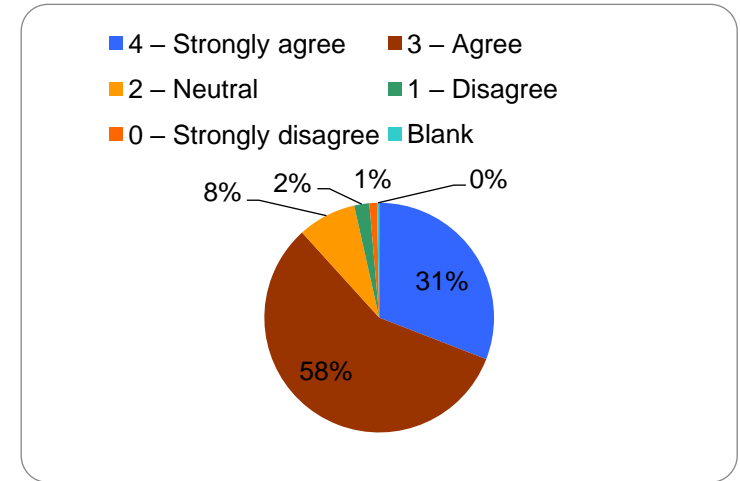
17. The institute/ teachers use student centric methods, such as experiential learning, participative learning and problem solving methodologies for enhancing learning experiences.

4 – To a great extent	199
3 – Moderate	355
2 – Some what	58
1 – Very little	25
0 – Not at all	16
Blank	4



18. Teachers encourage you to participate in extracurricular activities.

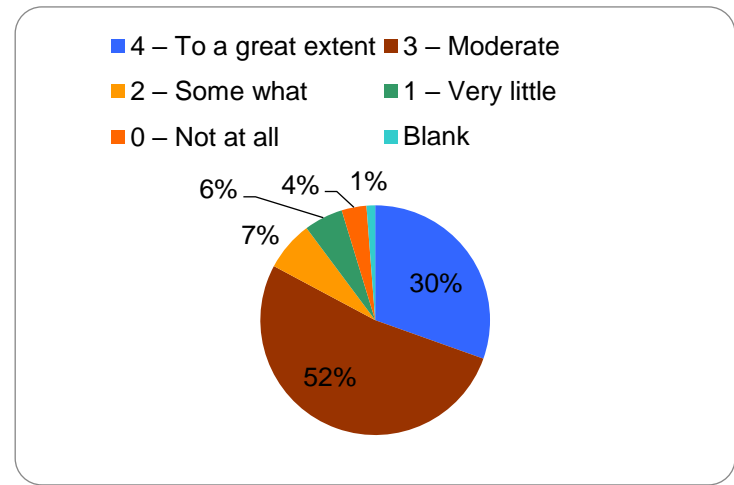
4 – Strongly agree	203
3 – Agree	377
2 – Neutral	54
1 – Disagree	14
0 – Strongly disagree	7
Blank	2



19. Efforts are made by the institute/ teachers to inculcate soft skills, life skills and employability

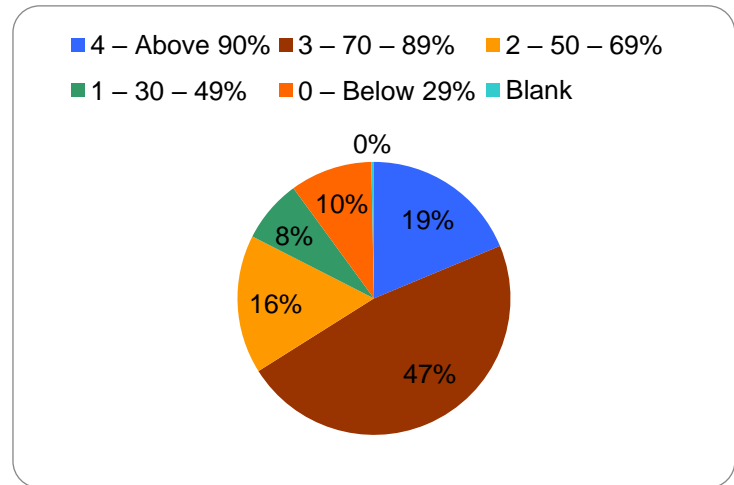
skills to make you ready for the world of work.

4 – To a great extent	200
3 – Moderate	344
2 – Some what	46
1 – Very little	36
0 – Not at all	23
Blank	8



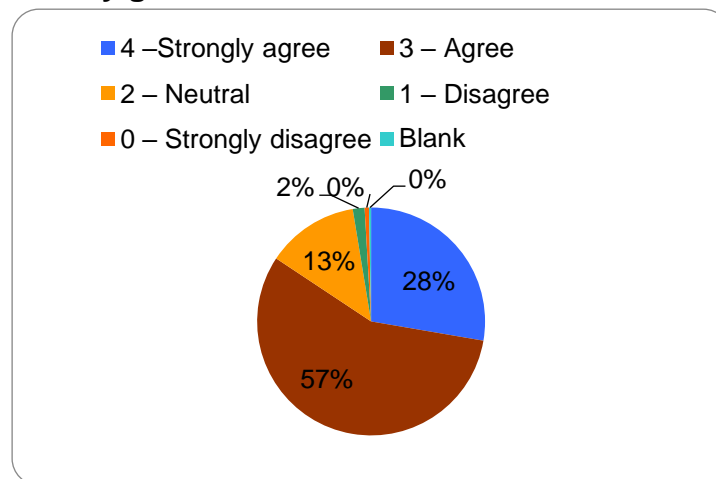
20. What percentage of teachers use ICT tools such as LCD projector, Multimedia, etc. while teaching.

4 – Above 90%	123
3 – 70 – 89%	311
2 – 50 – 69%	108
1 – 30 – 49%	49
0 – Below 29%	64
Blank	2



21. The overall quality of teaching-learning process in your institute is very good.

4 –Strongly agree	182
3 – Agree	372
2 – Neutral	86
1 – Disagree	11
0 – Strongly disagree	4
Blank	2

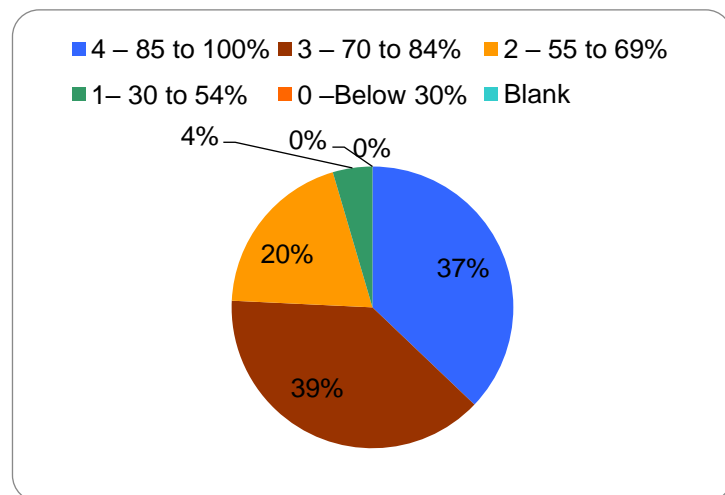


Science_PG

(N=132)

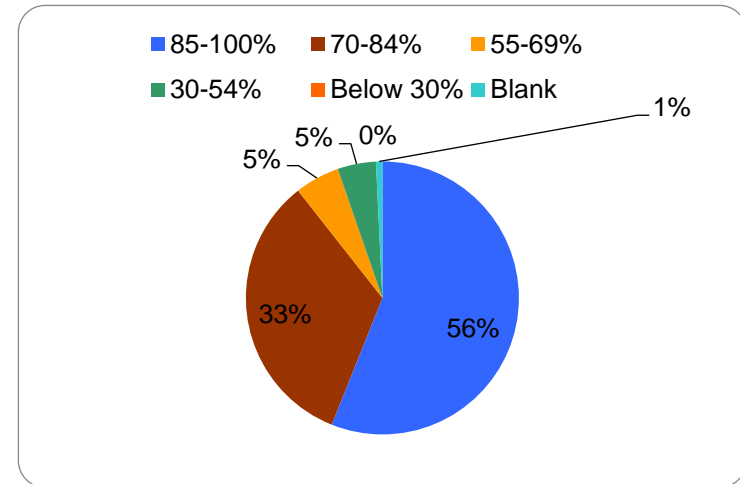
1. How much of the syllabus was covered in the class?

4 – 85 to 100%	49
3 – 70 to 84%	51
2 – 55 to 69%	26
1– 30 to 54%	6
0 –Below 30%	0
Blank	0



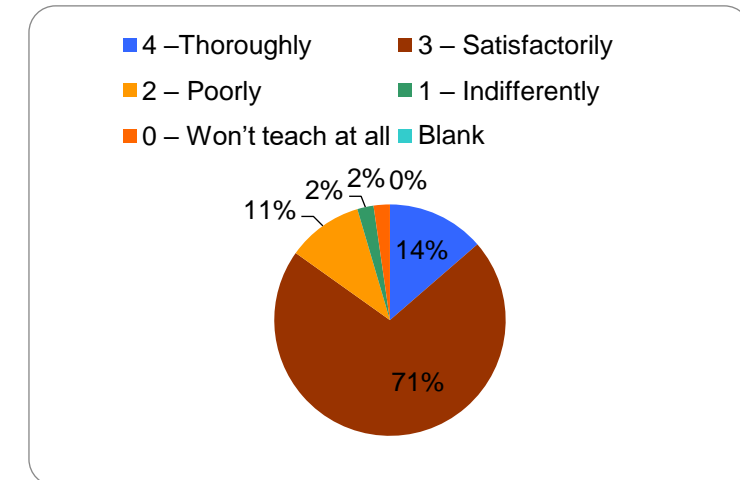
2. How many percentages of classes you have attended?

85-100%	74
70-84%	44
55-69%	7
30-54%	6
Below 30%	0
Blank	1



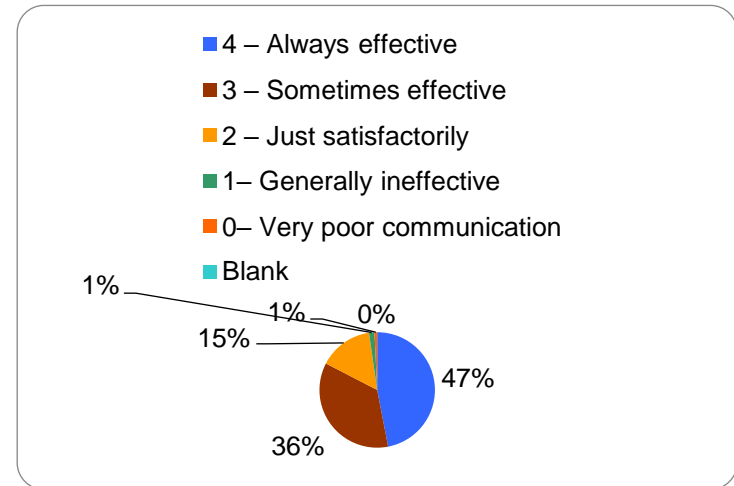
3. How well did the teachers prepare for the classes?

4 –Thoroughly	18
3 – Satisfactorily	94
2 – Poorly	14
1 – Indifferently	3
0 – Won't teach at all	3
Blank	0



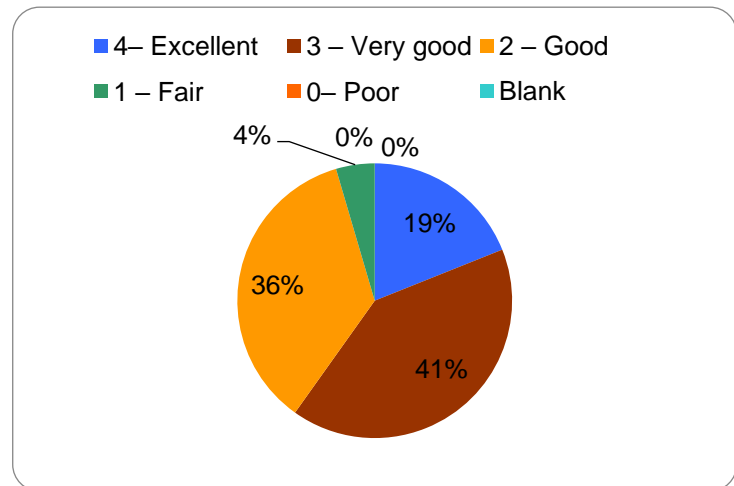
4. How well were the teachers able to communicate?

4 – Always effective	62
3 – Sometimes effective	47
2 – Just satisfactorily	20
1– Generally ineffective	2
0– Very poor communication	1
Blank	0



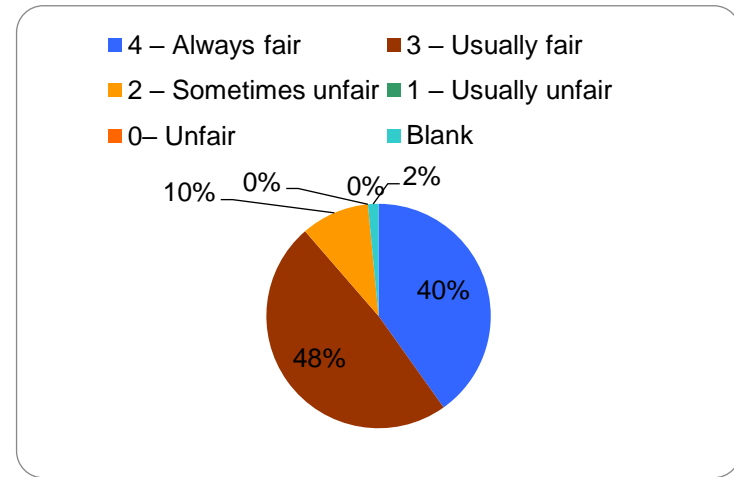
5. The teacher's approach to teaching can best be described as

4– Excellent	25
3 – Very good	54
2 – Good	47
1 – Fair	6
0– Poor	0
Blank	0



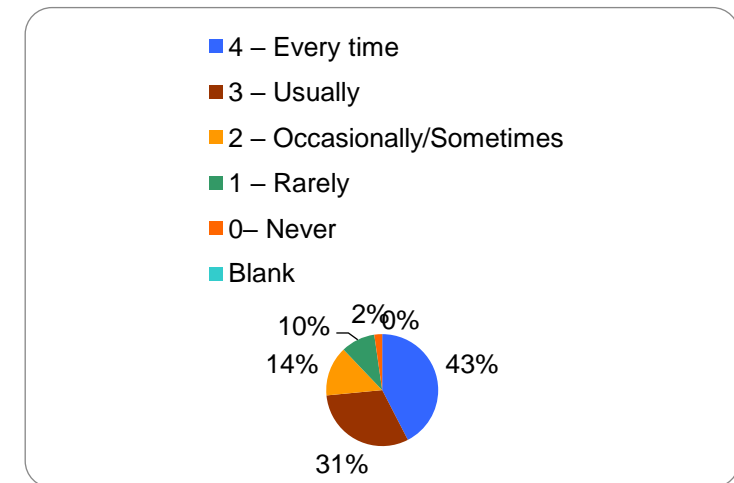
6. Fairness of the internal evaluation process by the teachers.

4 – Always fair	53
3 – Usually fair	64
2 – Sometimes unfair	13
1 – Usually unfair	0
0– Unfair	0
Blank	2



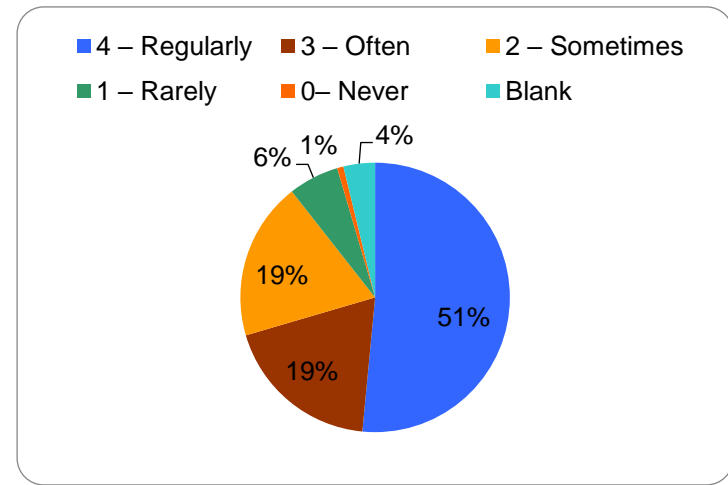
7. Was your performance in assignments discussed with you?

4 – Every time	56
3 – Usually	41
2 – Occasionally/Sometimes	19
1 – Rarely	13
0– Never	3
Blank	0



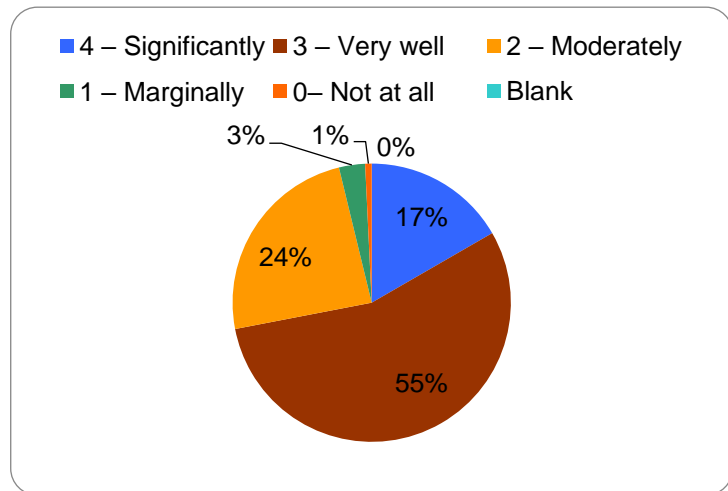
8. The institute takes active interest in promoting internship, student exchange, field visit opportunities for students.

4 – Regularly	68
3 – Often	25
2 – Sometimes	25
1 – Rarely	8
0– Never	1
Blank	5



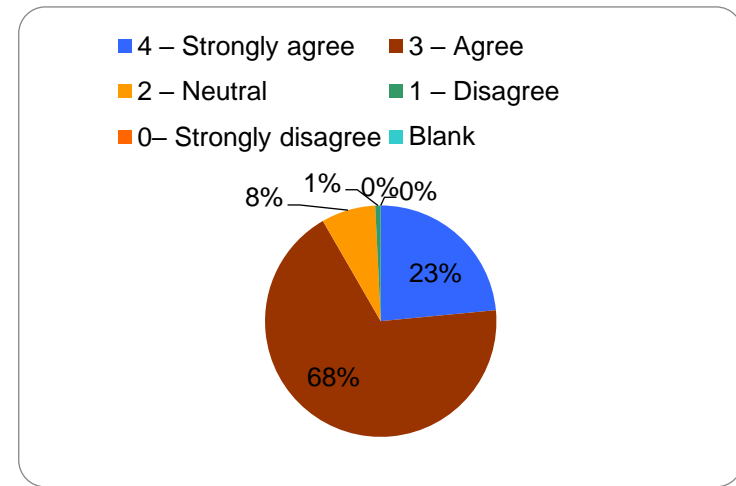
9. The teaching and mentoring process in your institution facilitates you in cognitive, social and emotional growth.

4 – Significantly	22
3 – Very well	73
2 – Moderately	32
1 – Marginally	4
0– Not at all	1
Blank	0



10. The institution provides multiple opportunities to learn and grow.

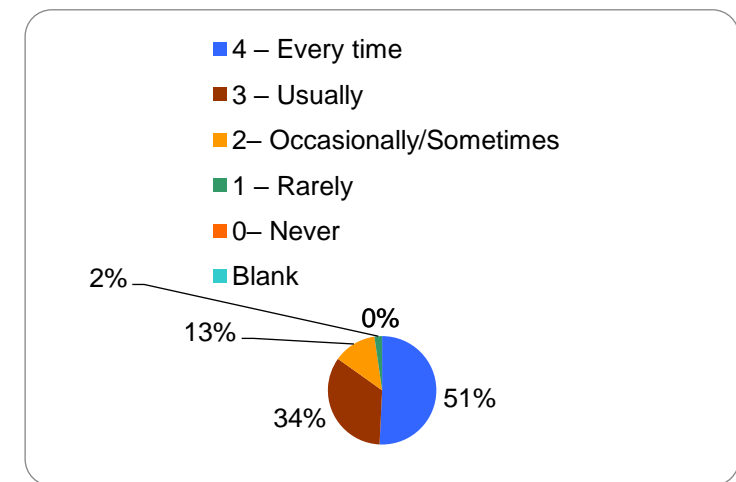
4 – Strongly agree	31
3 – Agree	90
2 – Neutral	10
1 – Disagree	1
0– Strongly disagree	0
Blank	0



11. Teachers inform you about your expected competencies, course outcomes and programme

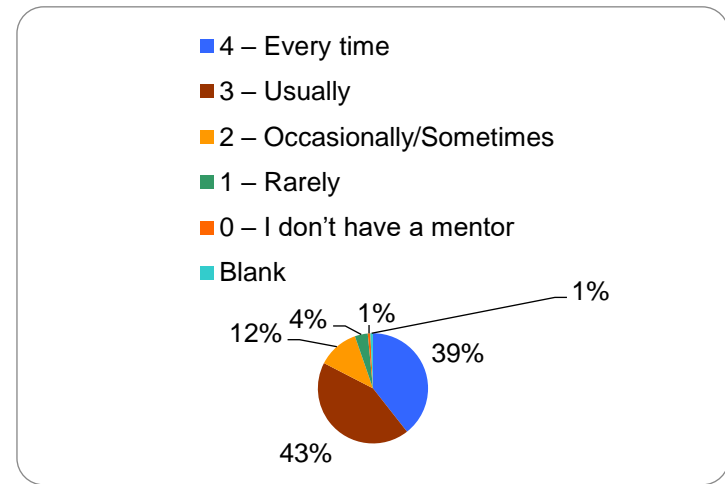
outcomes.

4 – Every time	67
3 – Usually	45
2– Occasionally/Sometimes	17
1 – Rarely	3
0– Never	0
Blank	0



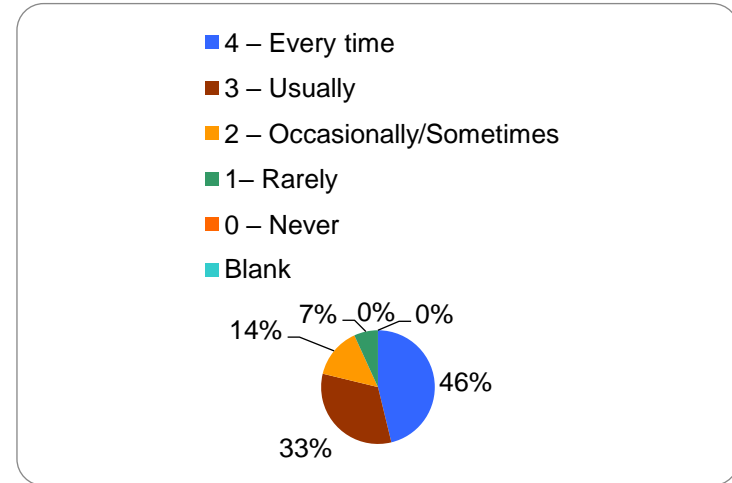
12. Your mentor does a necessary follow-up with an assigned task to you.

4 – Every time	52
3 – Usually	57
2 – Occasionally/Sometimes	16
1 – Rarely	5
0 – I don't have a mentor	1
Blank	1



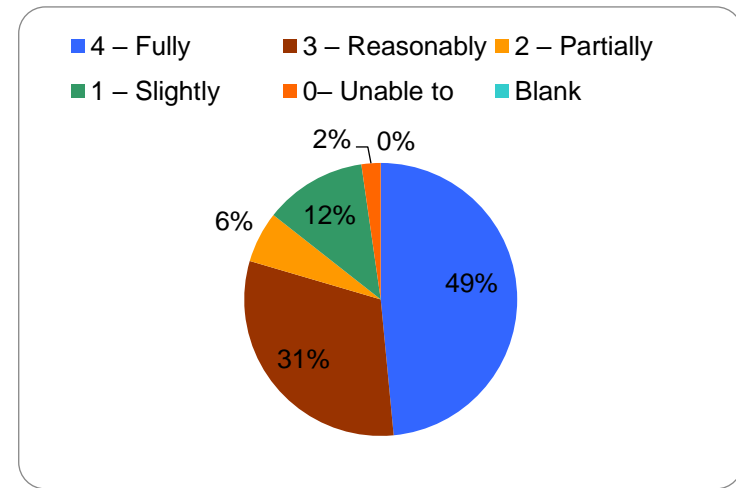
13. The teachers illustrate the concepts through examples and applications.

4 – Every time	61
3 – Usually	43
2 – Occasionally/Sometimes	19
1 – Rarely	9
0 – Never	0
Blank	0



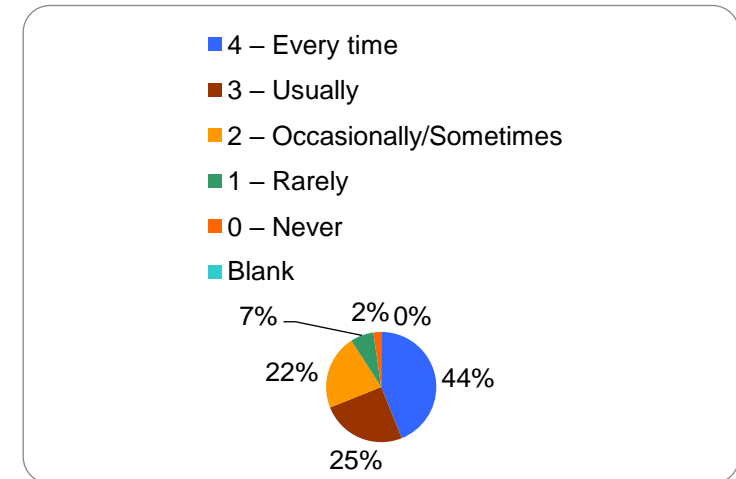
14. The teachers identify your strengths and encourage you with providing right level of challenges.

4 – Fully	64
3 – Reasonably	41
2 – Partially	8
1 – Slightly	16
0– Unable to	3
Blank	0



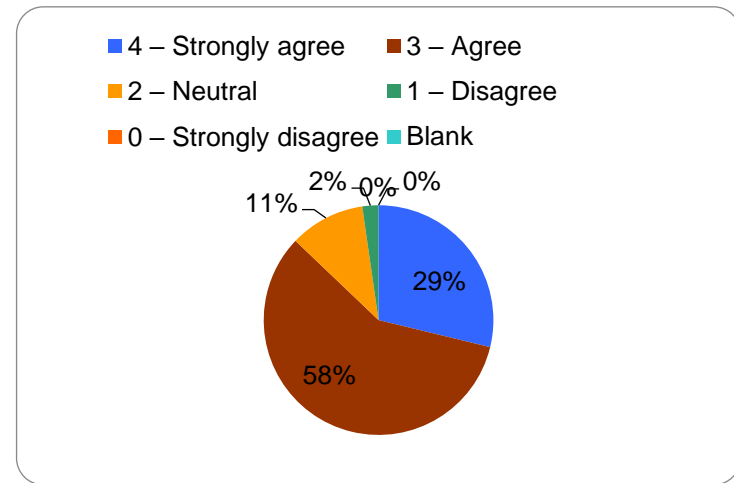
15. Teachers are able to identify your weaknesses and help you to overcome them.

4 – Every time	58
3 – Usually	33
2 – Occasionally/Sometimes	29
1 – Rarely	9
0 – Never	3
Blank	0



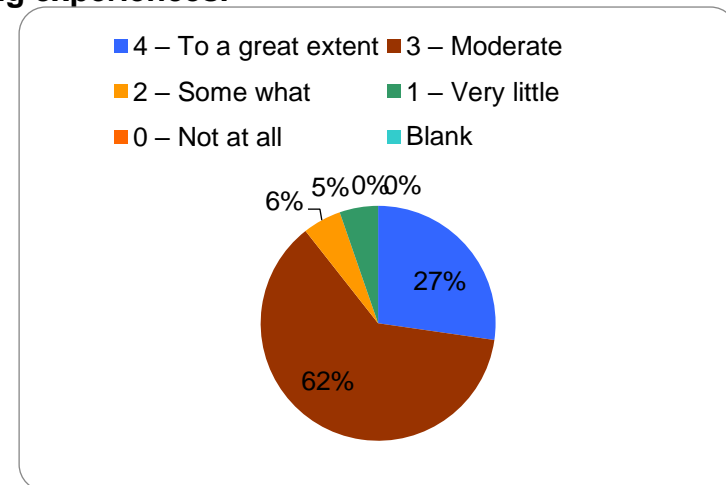
16. The institution makes effort to engage students in the monitoring, review and continuous quality improvement of the teaching learning process.

4 – Strongly agree	38
3 – Agree	77
2 – Neutral	14
1 – Disagree	3
0 – Strongly disagree	0
Blank	0



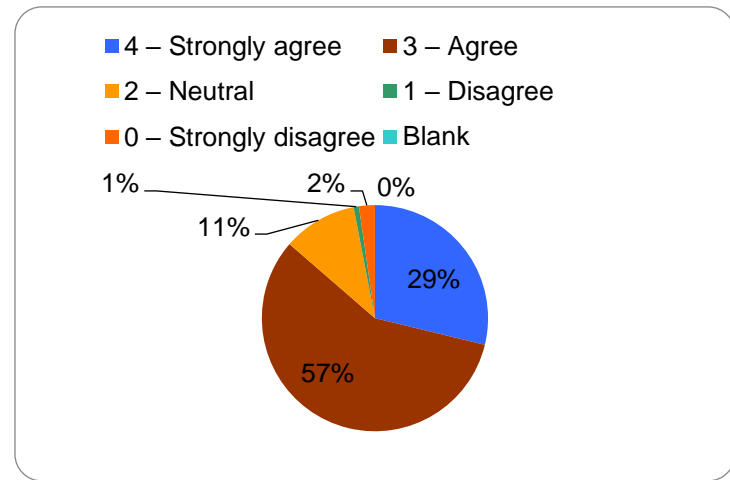
17. The institute/ teachers use student centric methods, such as experiential learning, participative learning and problem solving methodologies for enhancing learning experiences.

4 – To a great extent	36
3 – Moderate	82
2 – Some what	7
1 – Very little	7
0 – Not at all	0
Blank	0



18. Teachers encourage you to participate in extracurricular activities.

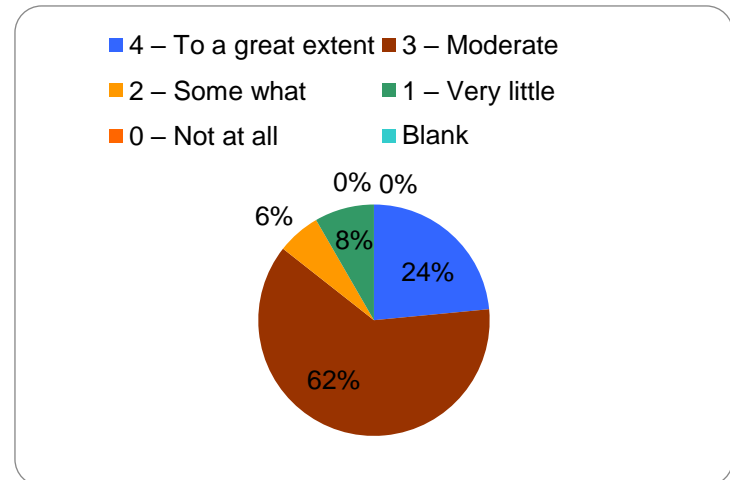
4 – Strongly agree	38
3 – Agree	76
2 – Neutral	14
1 – Disagree	1
0 – Strongly disagree	3
Blank	0



19. Efforts are made by the institute/ teachers to inculcate soft skills, life skills and employability

skills to make you ready for the world of work.

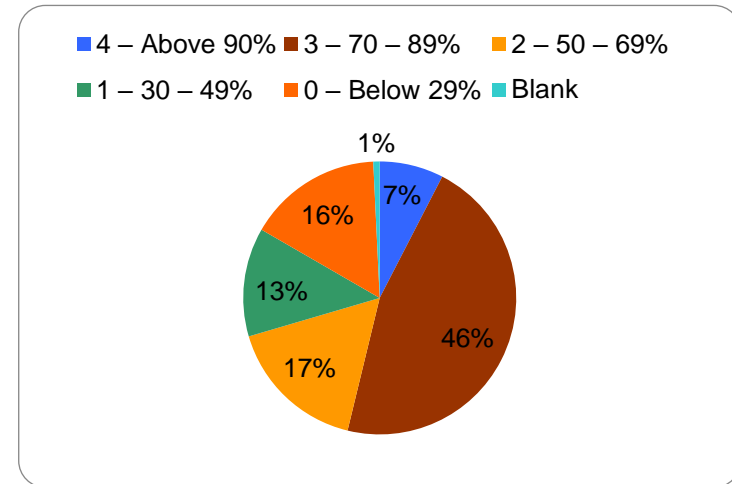
4 – To a great extent	31
3 – Moderate	82
2 – Some what	8
1 – Very little	11
0 – Not at all	0
Blank	0



20. What percentage of teachers use ICT tools such as LCD projector, Multimedia, etc. while

teaching.

4 – Above 90%	10
3 – 70 – 89%	61
2 – 50 – 69%	22
1 – 30 – 49%	17
0 – Below 29%	21
Blank	1



21. The overall quality of teaching-learning process in your institute is very good.

4 – Strongly agree	1
3 – Agree	76
2 – Neutral	18
1 – Disagree	3
0 – Strongly disagree	34
Blank	0

